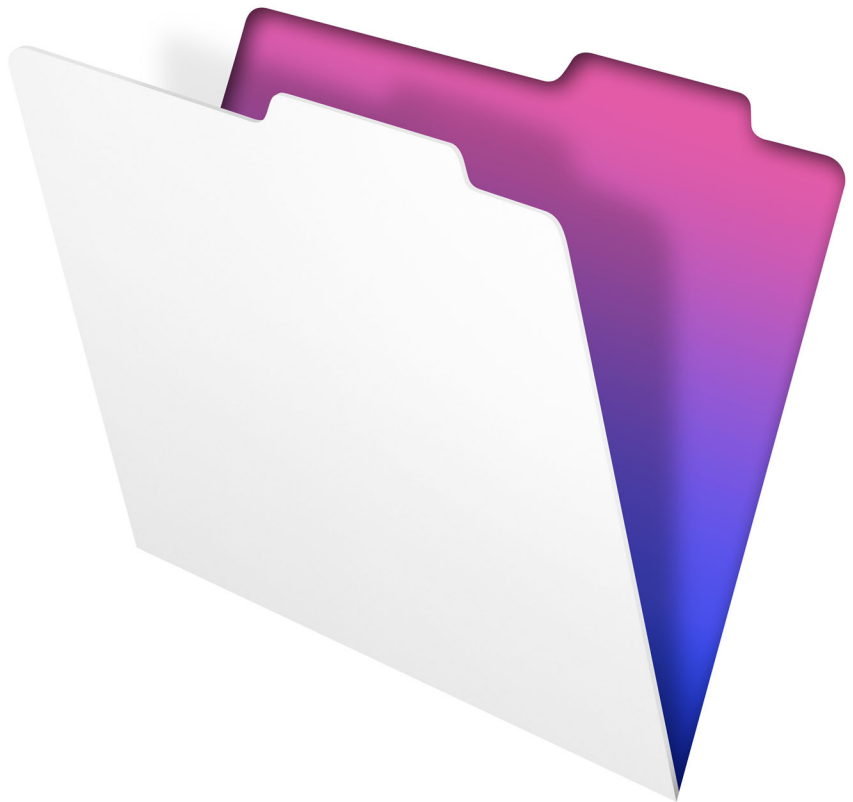


FileMaker® Pro 12

Advanced

Development Guide



© 2007–2012 FileMaker, Inc. All Rights Reserved.

FileMaker, Inc.

5201 Patrick Henry Drive

Santa Clara, California 95054

FileMaker is a trademark of FileMaker, Inc. registered in the U.S. and other countries. The file folder logo is a trademark of FileMaker, Inc. All other trademarks are the property of their respective owners.

FileMaker documentation is copyrighted. You are not authorized to make additional copies or distribute this documentation without written permission from FileMaker. You may use this documentation solely with a valid licensed copy of FileMaker software.

All persons, companies, email addresses, and URLs listed in the examples are purely fictitious and any resemblance to existing persons, companies, email addresses, or URLs is purely coincidental. Credits are listed in the Acknowledgements documents provided with this software. Mention of third-party products and URLs is for informational purposes only and constitutes neither an endorsement nor a recommendation. FileMaker, Inc. assumes no responsibility with regard to the performance of these products.

For more information, visit our website at <http://www.filemaker.com>.

Edition: 01

Contents

Chapter 1	
<i>Introducing FileMaker Pro Advanced</i>	5
About this guide	5
Using the FileMaker Pro Advanced documentation	5
Where to find PDF documentation	6
Abiding by the license agreement for runtime solutions	6
Your responsibilities as a developer	7
Chapter 2	
<i>Creating database solutions</i>	8
Using the Developer Utilities	8
About creating runtime solutions	9
Converting and upgrading previous solutions	10
Binding the solution	11
Starting runtime database solutions	12
Distributing runtime solutions	12
Organizing solution components	12
Choosing a distribution method	13
Testing before and after creating your solution	15
Distributing updates to runtime database solutions	15
Creating Kiosk solutions	16
Chapter 3	
<i>Customizing database solutions</i>	18
Copying or importing field and table schemas	18
Creating custom functions	19
About custom menus	20
Creating custom menus	21
Creating custom menu items	21
Creating custom menu sets	23
Using plug-ins to extend FileMaker Pro	24
Chapter 4	
<i>Debugging and analyzing files</i>	25
Debugging scripts	25
Disabling script steps	26
Disabling and enabling script triggers	27
Using the Data Viewer	27
Using the Database Design Report	29

Appendix A

Feature comparison of the runtime application with FileMaker Pro

Application and document preferences

Menu command comparison

Ignored script steps

Stored registry settings or preferences

31

32

33

38

38

Index

39

Chapter 1

Introducing FileMaker Pro Advanced

Welcome to FileMaker® Pro Advanced. This product includes advanced development and customization tools designed especially for database developers. You can use either FileMaker Pro or FileMaker Pro Advanced to create and test your database solutions.

In addition to all of the features that are available with FileMaker Pro, FileMaker Pro Advanced includes:

- Developer Utilities, for creating, customizing, and deploying runtime database solutions
- Database Design Report feature, for publishing comprehensive documentation on structures or schemas of databases
- Script Debugger, for systematic testing and debugging of FileMaker scripts
- Data Viewer, for monitoring fields, variables, and calculations
- Copy feature, for copying fields or tables. You can also import table schema for use within the same file or across different files.
- Custom Menus feature, for creating customized menus for the solution
- Custom Functions feature, for creating custom functions for use anywhere within the solution

About this guide

This *Development Guide* includes information about features that are available with FileMaker Pro Advanced.

See FileMaker Pro Help for detailed information on product features.

To send your feedback on this guide, visit:

http://www.filemaker.com/company/documentation_feedback.html.

To access resources on the FileMaker website such as ready-made solutions and the FileMaker Knowledge Base, choose **Help** menu > **Resource Center**.

To learn more about FileMaker Pro and discuss support topics with other customers, visit the FileMaker Forum. Choose **Help** menu > **FileMaker Forum**.

Using the FileMaker Pro Advanced documentation

This *Development Guide* is one component in a comprehensive documentation suite provided with FileMaker Pro Advanced. FileMaker Pro Advanced also includes an online Help system to provide details on FileMaker Pro features.

This guide assumes that you are familiar with FileMaker Pro or FileMaker Pro Advanced, and that you have created a database solution that you want to work on using the FileMaker Pro Advanced features. If you are new to the FileMaker family, start with the *FileMaker Pro User's Guide*.

The following manuals are included:

- *FileMaker Pro Advanced Development Guide* (this manual): describes how to use the features available in FileMaker Pro Advanced
- *Installation and New Features Guide for FileMaker Pro and FileMaker Pro Advanced*: contains installation instructions and a list of the new features in the current version
- *FileMaker Pro User's Guide*: contains key concepts and basic procedures
- *FileMaker Pro Tutorial*: contains step-by-step lessons that teach you how to create and use FileMaker Pro databases
- *FileMaker Pro Advanced Database Design Report XML Output Grammar* manual: describes the FileMaker Pro Advanced Database Design Report (DDR) XML output grammar for users who want to create tools that analyze or process the structure of databases
- *FileMaker Instant Web Publishing Guide*: describes how to make FileMaker Pro and FileMaker Pro Advanced databases accessible to web browser users over an intranet or the internet
- *FileMaker ODBC and JDBC Guide*: describes how you can use FileMaker software as an ODBC client application and as a data source for ODBC and JDBC applications.

Where to find PDF documentation

To access PDFs of FileMaker documentation:

- in FileMaker Pro Advanced, choose **Help** menu > **Product Documentation**
- visit <http://www.filemaker.com/documentation> for additional documentation

Abiding by the license agreement for runtime solutions

The FileMaker Pro Advanced license agreement allows you royalty-free distribution of an unlimited number of FileMaker Pro runtime database solutions. However, there are several terms and conditions in the license agreement you must abide by, including the following:

- You must provide all of the end-user technical support.
- You must provide an “About” layout that includes your name, address, and the telephone number for your technical support. For more information about creating an About layout, see “Your responsibilities as a developer” on page 7.
- You must read and agree to the terms and conditions of the FileMaker Pro Advanced license agreement, available through the FileMaker Pro Advanced installer, before using the FileMaker Pro Advanced software.

Your responsibilities as a developer

FileMaker, Inc. has established procedures for repairing files. If a customer complies with these procedures, then FileMaker may supply a repaired file to the customer.

Note FileMaker does not recover account names and passwords.

If you distribute database files with passwords or you have removed full access privileges and do not want FileMaker to repair a file for a customer who requests this service, you must:

1. Notify your customers in writing and keep a record of such notice that your database solution contains passwords or data that can only be provided by you.
2. Every file in your runtime database solution must contain an About layout accessible from any layout in the database.
3. The layout name must begin with the word “About.”
4. The About layout must contain these items:
 - solution name
 - your company name and contact information
 - your support policy (for example, how and when you are available for technical support)
5. The About layout must contain this exact warning:

“USER WARNING: This database solution contains password(s) that can only be provided by the Developer identified above.”

For more information about creating an About layout, see Help.
6. If full access privileges have been permanently removed from your database solution by selecting the **Remove admin access from files permanently** option in the Developer Utilities, then the About layout must contain this exact warning:

“USER WARNING: This file is not customizable. Contact the above named Developer for information on customizing this database solution.”

The accounts and privileges protection in a FileMaker file should not be viewed as an absolute barrier that will prevent a customer from accessing files. FileMaker cannot guarantee that a customer will not be able to identify or bypass the password through third-party solutions or tools. Therefore, FileMaker recommends that you take appropriate steps to protect your consulting and development efforts without relying solely upon the password. For more information about accounts and privileges, see Help.

If you have a dispute with your customer, you must resolve this dispute directly with the customer. FileMaker is unable to, and will not, attempt to resolve such disputes.

Chapter 2

Creating database solutions

FileMaker Pro Advanced provides Developer Utilities that let you:

- rename a set of database files and automatically update the internal links to related files and scripts
- bind your database files into a stand-alone runtime database solution that does not require FileMaker Pro or FileMaker Pro Advanced in order to be used on a computer
- remove administrative access from all accounts and prevent users from modifying most design or structural elements of your databases
- display your database files in Kiosk mode
- add the FileMaker Pro filename extension to your files

Note See FileMaker Pro Help for detailed, comprehensive information and step-by-step procedures about using FileMaker Pro Advanced.

Using the Developer Utilities

To customize your database files or bind the files to a runtime solution:

1. Close all of your database files that you are going to customize.
2. Choose **Tools** menu > **Developer Utilities**.
3. If you have used the Developer Utilities on the same database before and saved your settings, click **Load Settings**.
A dialog box opens so that you can browse to find your settings file.
4. Click **Add** to locate the files that you want to customize.
5. If you are binding multiple files into a runtime solution, double-click a file in the list to specify the primary file.
6. To rename a file, select the file in the list, type the new name in the **Rename file** box, and click **Change**.
7. To remove a file, select the file in the list and click **Remove**.
8. Under **Project Folder**, click **Specify** to choose the location in which the copy of the database solution will be saved.
9. If you do not want the new files to overwrite earlier versions, clear **Overwrite matching files within the Project Folder**.

Important If **Overwrite matching files within the Project Folder** is selected, the Developer Utilities will overwrite files with the same names as those in the list of files.

10. Do one of the following:

- If you want to create a copy of your database files with new names, click **Create**.

Note FileMaker Pro Advanced automatically updates internal links to related files and scripts.

- If you want to further customize your database files or bind the files, under **Solution Options**, click **Specify**.

11. In the Specify Solution Options dialog box, select one or more options:

To	Do this
Bind databases to runtime applications	Select Create Runtime solution application(s) . Note This option can be combined with all others, except Databases must have a FileMaker file extension . See “About creating runtime solutions,”
Permanently prohibit any administrative access to your solution	Select Remove admin access from files permanently . Important Once removed, administrative access cannot be restored to the custom solution. For more information about removing Admin access to databases, see Help.
Force accounts without full access privileges to open your solution in Kiosk mode	Select Enable Kiosk mode for non-admin accounts . See “Creating Kiosk solutions” on page 16.
Add the FileMaker extension to the filenames of database files	Select Databases must have a FileMaker file extension . Note This option is not available if you select Create Runtime solution application(s) . You can use this feature to add extensions to files that do not have extensions.
Create a log file to record any errors encountered during processing	Select Create Error log for any processing errors . Specify a location and a filename for the error log. Notes <ul style="list-style-type: none"> ▪ If you don't specify a filename and location for the error log, it will be saved to the project folder with the filename Logfile.txt. ▪ If an error occurs during the processing of the options, the error is logged in the error log. An error message may also indicate that an error has been encountered.

12. Click **OK**.

13. To be able to quickly repeat the process, click **Save Settings**, and choose a folder and location for your settings file. For more information about saving solution settings, see Help.

14. Click **Create**.

About creating runtime solutions

Use the Developer Utilities to produce a stand-alone runtime database solution that users can access without running FileMaker Pro or FileMaker Pro Advanced. The Developer Utilities create a copy of your files, and bind the database file or files to a runtime application with a name that you specify.

Runtime applications do not have all the functionality and features of FileMaker Pro. For a complete list of the differences between the runtime application and FileMaker Pro, see Appendix A, “Feature comparison of the runtime application with FileMaker Pro.”

You may need to bind your database files several times before you prepare them for delivery to your users. When you have completed development and the final version is bound and ready to distribute, you should thoroughly test your runtime solution to ensure that it behaves as expected.

Note FileMaker Pro and FileMaker Pro Advanced allow you to include as many database tables as you need in a database file. This capability eliminates one of the main reasons for using multiple files. However, other elements, like scripts and access privileges, are stored at the file level and so some complex solutions will still benefit from using multiple files.

Before you begin to build your database solution, you need to decide how users will interact with it. Your database solution might have any of the following components:

- a primary database file that connects all of the auxiliary files
- scripts and buttons to open auxiliary files, return to the primary file, display a splash screen layout at startup, or quit a runtime application
- common elements and a consistent appearance for cross-platform solutions
- tooltips and custom menus
- an About layout to introduce your solution (required)
- a custom Help system that provides usage tips for your solution
- multiple privilege sets that can specify levels of access to layouts, menus, specific tables, record, fields, and so on
- password-protected accounts assigned to privilege sets that determine the level of access of account users

For information about what users need in order to use your runtime database solution, see “Distributing runtime solutions” on page 12.

Converting and upgrading previous solutions

If you have developed a FileMaker Pro runtime database solution using the Solutions Development Kit (SDK) for FileMaker Pro 3.0 or earlier, the Binder utility in the FileMaker Pro 4.0 Developer Edition, or the Developer Tool in FileMaker Developer 5.x and 6.0, you can upgrade your solution and provide your users with the converted files. Files bound to a runtime application using the earlier tools must be rebound using the Developer Utilities.

You must convert FileMaker Pro files created in earlier versions to FileMaker Pro 12 format. Files created using versions prior to FileMaker Pro 7 must be converted to version 7, 8, 9, 10, or 11, then converted to version 12. You can convert a single file or convert multiple files at once. For more information about converting files, see Help.

After you have converted the files, you can upgrade them to take advantage of newer FileMaker Pro and FileMaker Pro Advanced features. If necessary, create scripts to import users’ existing data from the old runtime database solution into the new, upgraded solution. See Help for more information on importing data into upgraded runtime solutions. Use the Developer Utilities to bind the solution files into a new, upgraded runtime database solution.

Distribute the new upgraded runtime database solution and provide instructions for how users can upgrade their files by converting the old files in the new runtime application and importing their data.

Binding the solution

To bind database files into a runtime database solution:

1. Follow the procedures in “Using the Developer Utilities” on page 8.
2. In the Specify Solution Options dialog box, select **Create Runtime solution application(s)**.
3. To name your runtime application:
 - For **Runtime Name**, type a name. The name is used for the runtime application filename and for the name of the folder that contains the runtime database solution files.
 - For **Extension**, type a one- to five-character filename extension. The extension is used to associate the solution files with the runtime applications.

For more information about naming runtime solutions, see Help.

4. For **Bindkey**, type a key between 1 and 24 characters long.

The binding key links the runtime application to the database files and ensures that the bound files will only open in the appropriate runtime application. The binding key is case-sensitive. For more information on setting the binding key, see Help.

Important Binding installs system files pertaining to each platform. If your solution will be used in Windows, bind it using the Developer Utilities for Windows. If your solution will be used on Mac OS X, bind it using the Developer Utilities for Mac OS X. If you’re creating a solution to be used on both Windows and the Mac OS X, create two separate runtime solutions by binding the original solution files twice: once using FileMaker Developer Utilities for Windows, and again using FileMaker Developer Utilities for Mac OS X. Use the same binding key on both platforms.

5. To add a company logo or other custom image to the closing splash screen, click **Specify**, select the closing image, and click **Select**.

The image should be at least 32 x 175 pixels (72 dpi) or higher, otherwise it will be distorted when displayed. The supported image formats are JPEG and GIF.

6. For **Delay**, set the number of seconds that you want the splash screen to display.

You can preview the effect that your custom splash screen will have by clicking the **Preview** button.

7. Once you have specified options, click **OK**.

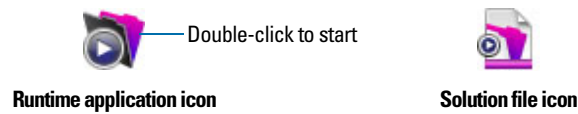
8. To be able to quickly repeat the process, click **Save Settings**, and choose a location for your settings file.

For more information about saving and reusing Developer Utilities settings, see Help.

9. Click **Create**.

The Developer Utilities copy all of the runtime files to a new folder created inside the Project Folder and named after the runtime solution.

Starting runtime database solutions



Important Your users should start your solution by double-clicking the runtime application icon, not the solution file icon. Double-clicking the icons for the solution or auxiliary files might result in errors, depending on whether there are other copies of the runtime application on their hard disk. If your users have more than one solution on their computers associated with the same one- to five-character extension and they double-click the icon for the solution file, the first solution installed will attempt to open the file, and this might not be the correct application for the specific file.

Distributing runtime solutions

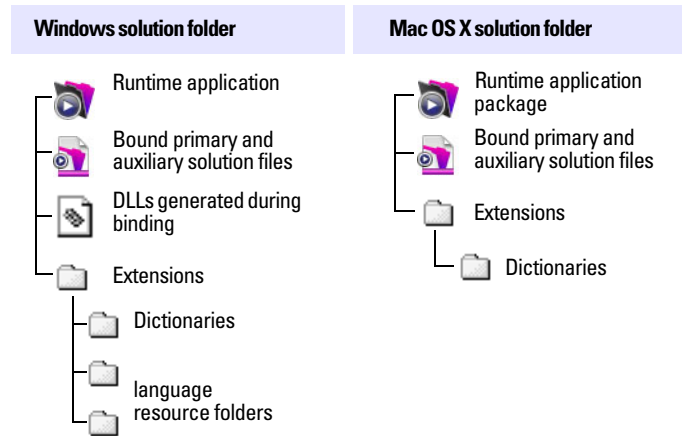
The final steps in developing your runtime database solution are to bundle all of the necessary files together, choose how you will distribute your solution—for example, on a CD-ROM or over a network—and provide your users with documentation for installing your solution. In addition, your documentation should include instructions for starting the runtime application and what to do if a file is damaged.

Note Windows: The proper method for distributing Runtime solutions (including the executable) is to use Installer software. This software must install components in the proper location in the Windows filesystem and provide an uninstall capability. See the Microsoft website for information about the location of installed files as well as location restrictions.

Organizing solution components

When you bind your database files into a runtime database solution, the Developer Utilities create a new solution folder and place the runtime application, the bound primary and auxiliary database files, and an Extensions folder inside it. For Windows runtime solutions, there are also required Dynamic Link Library (DLL) files.

Note When you move multiple files into one folder to create a runtime solution, be aware that your internal links are affected. For this reason, every data source must include a path that is just the filename of the file being referenced. Although the runtime application will check other data sources, it will then be able to find the file in the same folder in which it resides. You can still keep any absolute or relative paths in the same data source reference in case the files are also used in FileMaker Pro or FileMaker Pro Advanced.



Example of Windows and Mac OS X solution contents for distribution

Important These files and folders must not be renamed.

For details on the contents of the Mac OS X runtime application package and the Windows Extensions folder and DLLs, see Help.

If your runtime database solution requires custom files, you should provide the files with the runtime files. Plug-ins should be stored in the Extensions folder. If a developer uses a font not found on a user's system, the runtime application will make a font substitution. If a font is included with the runtime, provision should be made for its installation through the installer program. See "Using a custom installation program" below.

In addition to the runtime files, you will need to provide installation instructions for your users. For more information on documenting developer solutions, see Help.

Choosing a distribution method

After you have organized the files that comprise your solution, you need to decide how your users will install them. You can distribute your bundled solution on a CD-ROM, over a network, or via the internet. In order to run your runtime database solution, your users will need the same minimum equipment and software required by the FileMaker Pro Advanced application.

Using a custom installation program

You should use a custom installation program to package your runtime solution for installation by users. Configuring a custom installation application to install runtime database solution files may require more engineering than using a compression utility, but will help to ensure that your users do not have difficulties installing your runtime solution.

Here are some custom installation applications you might want to use:

- MindVision Installer VISE
- InstallShield MultiPlatform
- MacInstallerBuilder

Using a compression utility program

If your runtime database solution is not complex and you have confidence in the technical experience of your end users, you might consider a compression utility program rather than a custom installation program.

Sharing solutions over a network

Users cannot share your runtime database solution over a network unless they access the files using FileMaker Pro or FileMaker Pro Advanced installed on their machines. You must have a master password to enable or change network access to the file. For optimal performance, you can host the solution files using FileMaker Server.

For information about the FileMaker Server and FileMaker Pro products, and information about volume license sales, visit the FileMaker website at <http://www.filemaker.com>.

Recovering damaged files

Power failures, hardware problems, or other factors can damage a FileMaker database file. If your database solution becomes damaged, your users will need to recover the damaged file. When the runtime application discovers a damaged file, a dialog box appears, telling the user to contact the developer. Even if the dialog box does not appear, files can become corrupted and exhibit erratic behavior.

For information about recovering runtime files, see Help.

Creating an About layout

For runtime database solutions, the FileMaker Pro Advanced license specifies that you must create an About layout that provides information for your users on how to contact you for technical support. FileMaker uses the About layout to distinguish databases created by developers using FileMaker Pro Advanced rather than users of FileMaker Pro.

For more information about what is required to appear in the About layout for runtime database solutions, see “Your responsibilities as a developer” on page 7.

Creating a custom Help layout

The FileMaker Pro Advanced Help system is not available in runtime applications.

Create a Help layout that provides instructions for how to use your custom solution and add data to it. Then create a script in the primary file of your solution to display the Help system. Use the custom menus feature to make the script available as a command in the Help menu.

To create a web page to document your solution, put a web viewer in your Help layout that opens the web page.

For more information about creating and editing custom menus, see “About custom menus” on page 20.

Testing before and after creating your solution

You should verify the functionality of your database solution by testing it thoroughly before and after you customize it with the Developer Utilities.

To ensure the quality of your custom database solution:

- Verify every function and option in your solution. If you're developing a solution for both platforms, test it on both Windows and Mac OS X platforms.
- Make sure your runtime database solution does not use a standard FileMaker Pro feature that is hidden or disabled in the runtime application. See Appendix A, "Feature comparison of the runtime application with FileMaker Pro."
- Verify that all scripts and buttons work as expected. This is especially important if you're displaying your solution in Kiosk mode. See "Creating Kiosk solutions" on page 16.
- Verify your installation procedures and test other instructions in the documentation.
- Verify that your database layouts display well on monitors with different color capabilities and resolutions and on the smallest size monitor your users may be using.
- Test your runtime database solution with actual data. This is especially important if users are upgrading from earlier versions of the runtime application and need to import data into new solution files.
- Make sure all the auxiliary files and DLLs (Windows) are present.
- Show your database solution to intended users to uncover any usability issues.
- Install your bundled database files on a completely different computer to verify that all the files associated with the primary file can be found.
- If you're assigning passwords or permanently removing full access privileges, test all access levels.
- Make sure your database solution contains an About layout that notifies users of the level of access you're providing.

Important You should keep an unbound version of any runtime database solution files, especially if you've permanently removed full access privileges.

Distributing updates to runtime database solutions

If you make feature enhancements or modifications to the primary bound file of your runtime database solution, you can distribute the updated file to your users without rebinding it. If you change the filename of the primary file, however, you'll need to rebind the file and distribute a new version of the runtime application along with the updated file.

To distribute new or updated auxiliary files for your runtime database solution, bind them first using the original binding key. If you are distributing a new auxiliary file that requires new data sources in the main file or that requires other files to interact with it, you must update all files that have been modified.

If you forget the original binding key for your runtime database solution and want to update or add a file, you'll need to rebind all of the database files with a new binding key and redistribute the entire solution.

To distribute an updated primary file:

1. Open the original primary file from your copy of the runtime solution in FileMaker Pro Advanced.
2. Make the changes to the primary file.
3. If necessary, create an Import script so users can import their existing data into the new primary file.
For more information about importing data into upgraded runtime solutions, see Help.
4. Send your users a copy of the new primary file with instructions to replace the old primary file in the runtime database solution folder.

To distribute a new or updated auxiliary file:

1. In FileMaker Pro Advanced, create the new auxiliary file or open the original auxiliary file (before it was bound) and make changes as required.
2. If necessary, create an Import script so users can import their existing data into the new file.
For more information about importing data into upgraded runtime solutions, see Help.
3. Use the Developer Utilities to rebind all of the files in the runtime database solution and include the new or updated auxiliary file.
Use the same binding key that you used for the primary file.
4. Send your users a copy of the new or updated auxiliary file along with instructions to place it in the runtime database solution folder, replacing the old file if appropriate.
As long as the binding key has not changed, you don't need to redistribute the runtime application or other solution files.

Creating Kiosk solutions

Kiosk mode is a way of displaying your database solution or your runtime database solution on a full screen, without any toolbars or menus. As the name suggests, Kiosk mode can be used to present your database to users as an information kiosk. You can design your database to run through a touch screen.

Kiosk mode is ignored if the solution is opened by accounts with the Full Access privilege set, a privilege set that allows management of extended privileges, or a privilege set that allows modification of layouts, value lists, and scripts.

For your solution to display in Kiosk mode, you must:

- create an account with a limited privilege set or create a specific Kiosk account.
- enable Kiosk mode. At the same time that you enable Kiosk mode, you can bind the database as a runtime solution.
- clear the default option of logging into the file with the Admin account.

To create a limited-access Kiosk account:

1. With the database solution open, choose **File** menu > **Manage** > **Security**.
2. In the Manage Security dialog box, click **New**.
3. In the Edit Account dialog box, type an account name.
4. For **Account Status**, click **Active**, and for **Privilege Set**, select **New Privilege Set**.
5. In the Edit Privilege Set dialog box, give the privilege set a name and description.
6. For **Layouts**, **Value Lists**, and **Scripts**, select either **All view only** or **All no access**.
7. Clear the **Manage extended privileges** checkbox.
8. Select other options as required and click **OK** until all dialog boxes are closed.

To enable Kiosk mode:

1. Follow the procedures in “Using the Developer Utilities” on page 8.
2. In the Specify Solution Options dialog box, select **Enable Kiosk mode for non-admin accounts**.
3. Select other options as required and click **OK**.
4. You can quickly repeat this process by clicking **Save Settings** and choosing a folder and location for your settings file.

For information on saving solution settings, see Help.

5. Click **Create**.

If you did not bind the files to a runtime application, the Developer Utilities copy the selected database files to the Project Folder. If you did bind the files to a runtime application, the Developer Utilities copy all of the runtime files to a new folder created inside the Project Folder and named after the runtime solution.

To change the default option of logging into the file with the Admin account:

1. With the database solution open, choose **File** menu > **File Options**.
2. In the Open tab, clear **Log in using**.
3. Click **OK**.

When you create a solution to run in Kiosk mode, you need to provide navigation for your solution and the ability for users to quit your solution.

Note If you have a previous Kiosk solution that displayed the status area, you will need to update your solution. You cannot display the status toolbar or layout bar in a Kiosk solution, so you need to add record navigation, script paused status, and script Cancel and Continue buttons to your layouts.

For more information on using scripts and buttons to control Kiosk solutions, see Help.

Chapter 3

Customizing database solutions

You can use FileMaker Pro Advanced to customize your solutions beyond what is possible with FileMaker Pro. You can:

- copy and paste fields for use within the same file or other database files
- copy or import existing tables into your database file
- create custom functions for use anywhere within a file
- create custom menus
- create plug-ins that extend the feature set of FileMaker Pro

Important You must have full access privileges to customize database solutions.

Note See Help for detailed, comprehensive information and step-by-step procedures about using FileMaker Pro Advanced.

Copying or importing field and table schemas

You can copy or import field and table schemas within a file or to other database files.

With FileMaker Pro Advanced, you can consolidate tables from a multi-file solution into one file. There are two methods for consolidating solutions:

- Copy table schemas — Open source files to select and copy the tables you want. Then, paste the table schemas into the destination file.
- Import table schemas — Import table schemas directly into the destination file. You can import just the schemas or import data with a single schema. (To import the data with a single schema, choose **File** menu > **Import Records** > **File**.)

To	Do this
Copy a field schema	Choose File menu > Manage > Database > Fields tab. Select the field from the list, then click Copy . Data is not copied.
Copy a table schema	Open the file that contains the table you want to copy. Choose File menu > Manage > Database > Tables tab. Select the table from the list, then click Copy .
Import a table schema	Open the file into which you want to import a table. Choose File menu > Manage > Database > Tables tab. Click Import . Select the source file and table, and click OK .

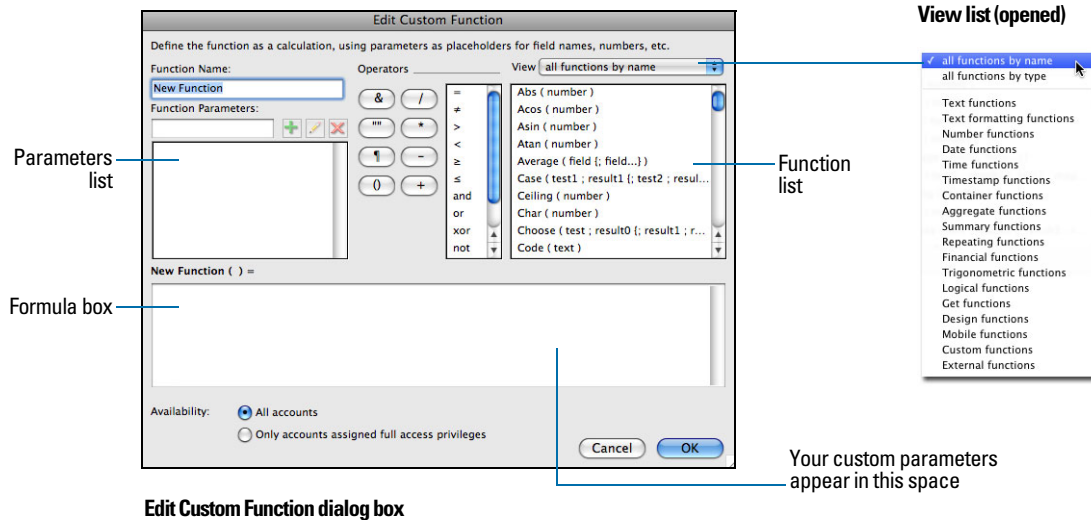
For more information about copying or importing fields and tables, see Help.

Creating custom functions

Use the Custom Functions feature to create custom functions that can be reused anywhere in a database file and copied or imported to other FileMaker Pro files. Once formulas are written for the function, they don't have to be rewritten to be applied to other fields or used in other scripts. You can maintain and edit custom functions and the formulas they contain in one central location. Any change made to the custom function will be copied to all instances where that custom function has been used.

To create a custom function:

1. Choose **File** menu > **Manage** > **Custom Functions**.
2. In the Manage Custom Functions dialog box, click **New**.

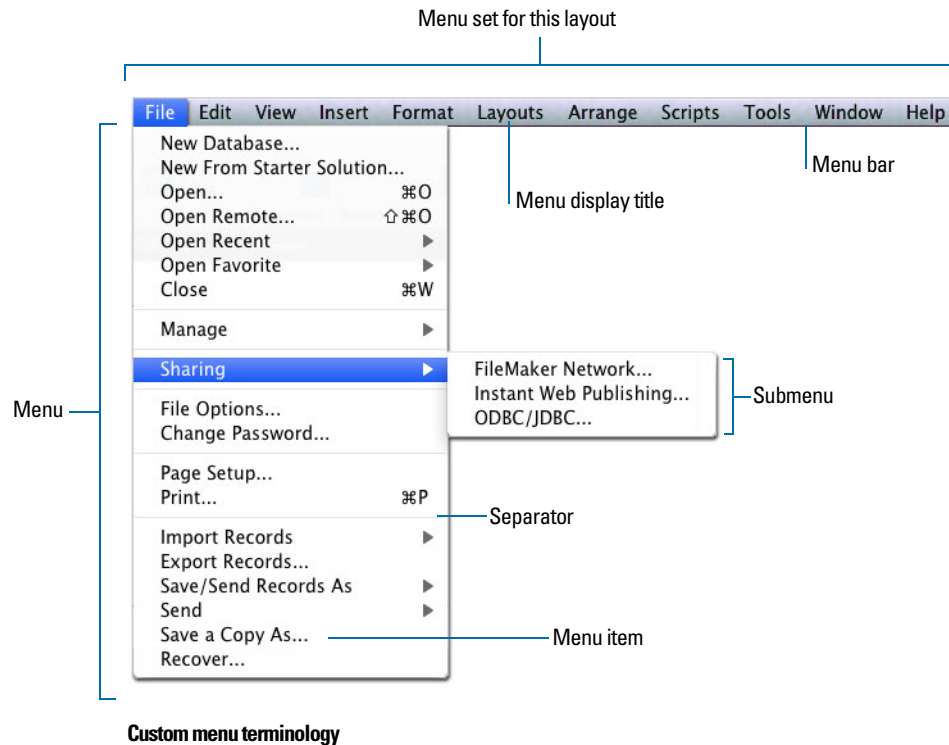


3. In the Edit Custom Function dialog box, type a name for the function and build a formula.
 4. Click **OK**.
- For more information about creating custom functions, see Help.

About custom menus

With FileMaker Pro Advanced, you can create custom menus, menu items, and menu sets for your database solutions. You can:

- create a menu or edit an existing menu
- duplicate or delete a menu
- add, duplicate, or delete menu items
- specify menu item properties, such as display title, shortcut, and action.



You can customize menus by:

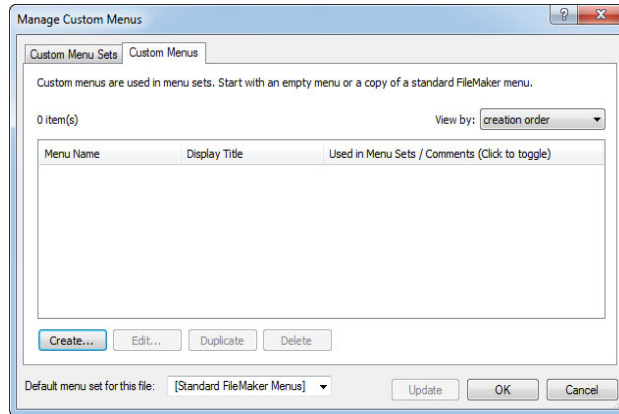
- editing a copy of a standard FileMaker menu. Use this method to make minor changes to existing menus, for example, to modify the properties of a few menu items.
- starting with an empty menu. Use this method to make significant changes to menus, for example, to add menus and change menu item properties.

Creating custom menus

To create a custom menu:

1. Choose **File** menu > **Manage** > **Custom Menus** > **Custom Menu** tab.

You see the Manage Custom Menu dialog box.



2. If FileMaker Pro Advanced includes menus that do not exist in this file, click **Update** to add missing menus to the file.
3. Click **Create**.
4. In the Create Custom Menu dialog box, do one of the following, then click **OK**:
 - Click **Start with an empty menu**.
 - Click **Start with a standard FileMaker menu**, then select a menu from the list.
 The Edit Custom Menu dialog box appears.
5. In the Edit Custom Menu dialog box, specify a custom menu name, a comment that describes the menu (optional), the menu title that you want to display in the menu bar, conditions under which the menu should be installed or not installed, and the FileMaker Pro modes in which the menu should appear. See “Creating custom menu items” for information on specifying a platform for a custom menu.
6. Create custom menu items, as described in the following section.

Creating custom menu items

After you create a menu, you can create menu items. You can also create or edit menu items that are copies of the Standard FileMaker menus. Menu items can be commands, submenus, or separators. You can create a menu item that is based on a standard FileMaker command or you can create a menu item that initially does not have an assigned command.

When you base a menu item on a FileMaker command, the menu item inherits all the properties of that command. You can override properties (menu item name, keyboard shortcut, or action) to customize the menu item.

When you create a menu item that does not have an assigned command, an <unknown> menu item appears in the Menu Items list in the Edit Custom Menu dialog box. You can then customize this menu item’s properties.

To create a new menu item:

1. Choose **File** menu > **Manage** > **Custom Menus** > **Custom Menus** tab.
2. In the Manage Custom Menus dialog box, select the menu to which you want to add the menu item, then click **Edit**.
3. In the Edit Custom Menu dialog box, specify which menu items are included in the menu:

To	Do this
Add a command	Click Create to add a new (<unknown>) menu item to the list. For Menu Item Type , choose Command , then select Based on an existing command . In the Specify FileMaker Command dialog box, choose a command, then click Select (Windows) or OK (Mac OS) . A command determines the action or behavior of a menu item.
Add a submenu	Click Create to add an <unknown> menu item to the list. For Menu Item Type , choose Submenu , click Specify , select a menu, and click Select . Note You can add up to 100 menus to the menu bar. If you add a menu that includes itself as a submenu, you may quickly reach the limit.
Add a separator line	Click Create to add an <unknown> menu item to the list. For Menu Item Type , choose Separator .
Duplicate a menu item	Select a menu item from the list, then click Duplicate .
Delete a menu item	Select a menu item from the list, then click Delete .

Drag an arrow  up or down to change the order of the menu items in the list.

To change the properties of a menu item:

1. Select a menu item from the Menu Items list and do one or more of the following:

To	Do this
Change a command for a menu item	For Based on an existing command , click Specify , choose a different command, then click Select (Windows) or OK (Mac OS).
Change a menu item from one type to another	For Menu Item Type , choose a different type. (For example, you can change a separator to a command.)
Change the name of a menu item	Select Item Name and enter a new name. To base the menu title on the result of a calculation, click Specify , then build a formula in the Specify Calculation dialog box. Windows: To specify an access key, type an ampersand (&) before the character you want to use as the access key. For example, type &Open to display the Open menu item with the letter “O” as the access key.
Define a keyboard shortcut for a menu item	Select Keyboard Shortcut . In the Specify Shortcut dialog box, type a key combination, then click OK . Keyboard shortcuts appear next to menu items in the Menu Items list. For more information about keyboard shortcuts, see Help.
Perform a script or script step when a user selects a menu item	Select Action . In the Specify Script Step dialog box, select a step and specify options as necessary, then click OK . Note To affect the behavior of a currently running script (for example, to halt, exit, resume, or pause the script) use the Perform Script script step. For more information about scripts and script steps, see Help.
Change a script or script step	For Action , click Specify , modify the script definition, then click OK .
Install menu items based on conditions you specify	For Install when , specify a calculation that results in a Boolean value. If the calculation evaluates true or non-zero, the menu item is installed. For example, for the menu item to appear when the file is opened in Windows, enter: <code>If (Abs (Get (SystemPlatform)) = 2 ; 1 ; 0)</code> When the calculation evaluates false or zero, the menu item is not installed. For example, for the menu item to appear when the file is opened in Mac OS, enter: <code>If (Abs (Get (SystemPlatform)) = 1 ; 1 ; 0)</code> To ensure a menu item is always installed, for Install when , enter 1.

2. Click **OK**.

Creating custom menu sets

Custom menu sets are collections of menus that appear in the FileMaker Pro application menu bar. You can create custom menu sets to include only the menus you require. After you create menu sets, you can:

- specify menu sets for individual layouts
- create scripts that change menu sets
- change the default menu set in a solution file’s menu bar
- switch menu sets temporarily using the FileMaker Pro Advanced Tools menu

To create or edit menu sets:

1. Choose **File** menu > **Manage** > **Custom Menus** > **Custom Menu Sets** tab.

2. Click **Create**.

3. In the Edit Custom Menu Set dialog box, click **Add** to specify which menus to include in the menu set.

To:	Do this:
Add a menu to this menu set	Click Add , do one of the following in the Select Menu dialog box, then click Select : <ul style="list-style-type: none"> Choose a menu from the list. Click + to create a new menu. For more information, see “Creating custom menus” on page 21. Click – to remove a custom menu in the Select Menu dialog box. Default FileMaker Pro menus shown in brackets [] in the Select Menu dialog box cannot be removed from the list. <p>Tip You can Shift-click or Ctrl-click (Windows) or Command-click (Mac OS) additional menus to add multiple menus to the menu set.</p>
Change the properties of a menu in this menu set	Select the menu, then click Edit . For more information, see “Creating custom menu items” on page 21.
Remove a menu from this menu set	Select the menu, then click Remove .

4. Click **OK** to return to the Manage Custom Menus dialog box.
5. To change the default menu set for this file, select **Default menu set for this file** and click **OK**. You see the new menu set in FileMaker Pro. For more information about creating, installing, and testing custom menu sets, see Help.

Using plug-ins to extend FileMaker Pro

If you are a C or C++ programmer and you are familiar with calculations in FileMaker Pro and FileMaker Pro Advanced, you can create plug-ins that extend the feature set of the FileMaker application. For example, plug-ins can take advantage of recursion and looping or hook into other programming interfaces. For more information, see Help.

Chapter 4

Debugging and analyzing files

The FileMaker Pro Advanced features explained in this chapter are:

- the Script Debugger for systematic testing and debugging of FileMaker scripts
- the Disable script step feature for testing portions of a script
- the Database Design Report feature for publishing comprehensive documentation on database schema and options
- the Data Viewer for monitoring fields, variables, and calculations

Note See Help for detailed, comprehensive information and step-by-step procedures for using FileMaker Pro Advanced.

Debugging scripts

With FileMaker Pro Advanced, you can use the Script Debugger to:

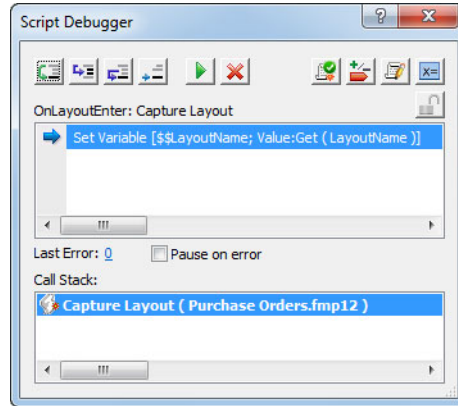
- debug scripts that are run from the Scripts menu or keyboard shortcuts
- debug startup scripts (the Script Debugger menu is enabled even if there are no open files)
- debug a script activated by a script trigger, button, or custom menu
- step through scripts one step at a time
- view subscripts as you step through scripts
- set or clear breakpoints in a script
- monitor fields, variables, and calculations
- disable script steps
- debug restricted-access scripts
- pause a script when script errors are encountered
- click a script error number to open a Help topic
- temporarily disable or enable script triggers while you work in the Script Debugger

To run scripts in debug mode:


1. Select **Tools** menu > **Script Debugger**.

The Script Debugger dialog box opens.

2. Run your script.




You can view sub-scripts when you step through scripts in the Script Debugger. For example, if Script A calls Script B, which then calls Script C, you can view the steps in all three scripts.

The Script Debugger recognizes the privileges attached to each script. A script will only appear in the Script Debugger if you have editing privileges for the script and the access privileges for the script are set to Modifiable. You can click Authenticate/Deauthenticate script  to log in and edit script steps in restricted-access scripts.

In the Script Debugger window you can select more than one step from the step list, enabling you to place simultaneous multiple breakpoints on steps. If multiple steps are selected, the Set Next Step button is disabled.

Notes


- You can't set breakpoints on script steps called by buttons or custom menus.
- When you use the Script Debugger to step through enabled scripts activated by a script trigger, you can't interact with the document windows, move between fields or records, change the data, close the window, or quit. This blocking of interaction only occurs when a script is triggered via some action. When you are debugging a script that is not activated by a script trigger, you can interact normally with the document windows, fields, and records. For more information about using script triggers, see Help.

Tip To enable the Script Debugger from the Manage Scripts dialog box, press Shift and click the Perform  button. To disable the Script Debugger, press Ctrl (Windows) or Command (Mac OS) and click the Perform button.

Disabling script steps



You can disable and enable script steps to test portions of a script. When you run a script, disabled script steps are skipped.

To disable script steps:

1. Choose **Scripts** menu > **Manage Scripts**.
Or, choose **File** menu > **Manage** > **Scripts**.
2. In the Manage Scripts dialog box, double-click the script name.
Or, click the Edit  button in the Script Debugger dialog box.
3. In the Edit Script dialog box, select one or more script steps, then click **Disable** or **Enable**.

Disabling and enabling script triggers

You can temporarily disable and enable script triggers while you work in the Script Debugger. You must have Full Access privileges to disable script triggers. Script triggers are enabled by default.

1. Select **Tools** menu > **Script Debugger**.
2. To disable all script triggers in a file, click  or choose **Tools** menu > **Debugging Controls** > **Disable Script Triggers**.
3. To enable all script triggers, click  or choose **Tools** menu > **Debugging Controls** > **Enable Script Triggers**.

When you close the Script Debugger, all disabled script triggers are enabled.

For more information about debugging scripts, see Help.

Using the Data Viewer


You can use the Data Viewer to monitor expressions like field values, local and global variables, and calculations. You can monitor these expressions while running scripts or while testing them in the Script Debugger.

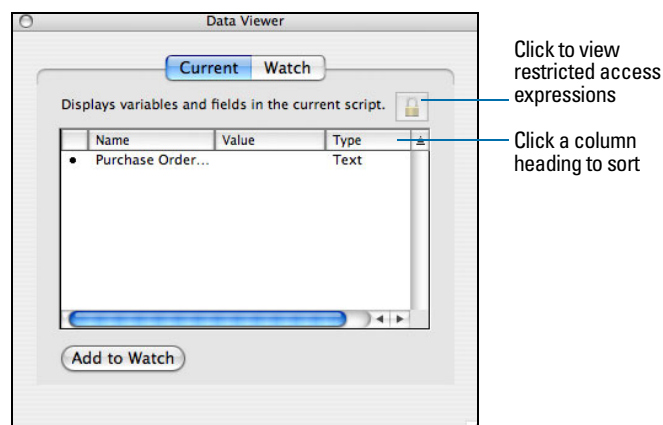
The **Current** tab shows:

- fields used by the currently running script whether they are referenced directly in the script or indirectly in calculations
- local variables used by the currently running script
- global variables independent of any script


The **Watch** tab monitors expressions. You can enter expressions, one per row, in the Data Viewer. When you use the Data Viewer with the Script Debugger, the **Watch** tab displays expressions from paused scripts letting you see how data changes as you step through a script. Expressions remain in the **Watch** tab until you manually delete them.

Monitoring the currently running script

1. Choose **Tools** menu > **Data Viewer**, or click the Open/Close Data Viewer  button in the Script Debugger window.
2. Click the **Current** tab.

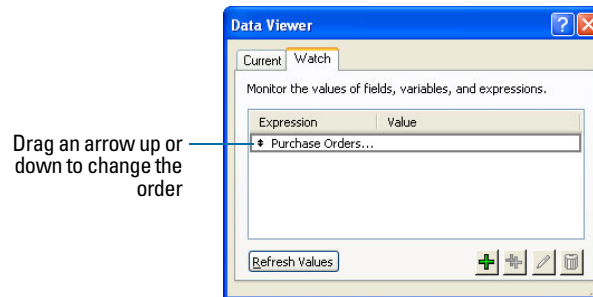


3. Perform the following tasks in the **Current** tab:

To	Do this
Edit or copy local or global variables	Double-click a variable in the list.
Sort fields and variable in the list	Click a column heading. Items in the list are grouped by type, then sorted in this order: fields, global variables, local variables.
Add an expression to the Watch list	Click Add to Watch . FileMaker Pro switches to the Watch tab where the expression appears.
View restricted-access expressions	Click  , then log into an account that has full access privileges. Note If you log in to edit restricted-access scripts in the Script Debugger, your access privileges also apply to the Data Viewer. If you log in via the Data Viewer, your access privileges also apply to the Script Debugger. In either case, your editing privileges last until you close the Script Debugger or the Data Viewer.

Monitoring expressions

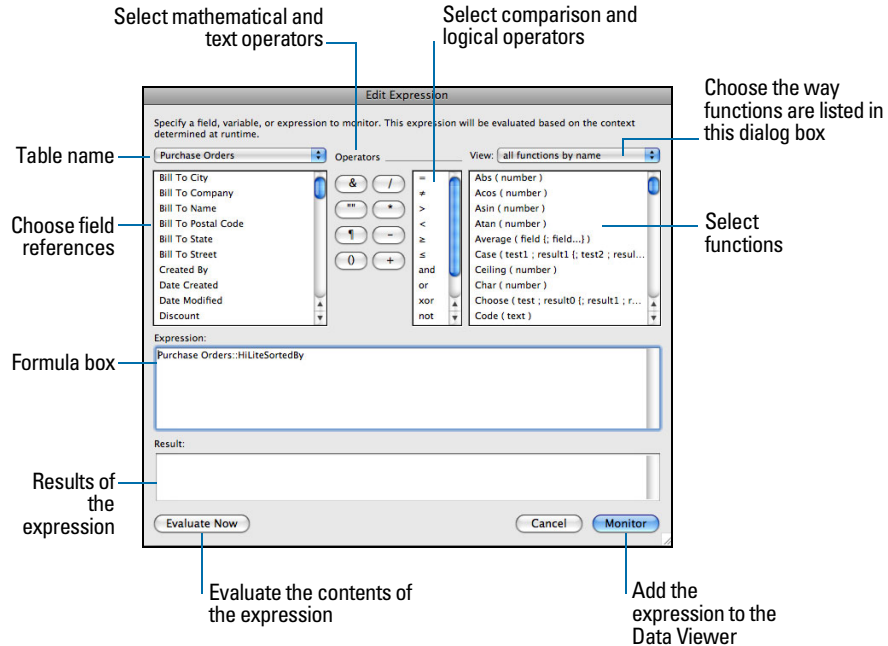
1. In the Data Viewer, click the **Watch** tab.






2. Perform the following tasks:

- To add an expression, click .

In the Edit Expression dialog box, build an expression, then click **Monitor** to add the expression to the Data Viewer.



- To edit an expression, double-click the expression in the list or select an expression and click . Click **Evaluate Now** to display the results of the expression or click **Monitor** to add the expression to the Watch list.
- To duplicate expressions, select one or more expressions, then click .
- To delete expressions, select one or more expressions, then click .
- To update the values for calculations displayed in the list, click **Refresh Values**. Values update as you scroll through the list.

For more information about using the Data Viewer, see Help.

Using the Database Design Report

Use the Database Design Report (DDR) feature to document the schema of your database and publish it to an HTML or XML file. You can choose which elements and database tables in the database you want to report. The HTML version of the report is hyperlinked and you can view or print it in a Javascript-enabled web browser.

With the Database Design Report feature you can:

- examine a textual representation of your database schema
- gather statistics on the structure of your database
- use the information in the report to recreate the structure of your database if you lose the original database files
- troubleshoot missing references, broken relationships, calculations, and more

To create a Database Design Report:

1. Open all database files for which you want to produce a Database Design Report.
You must have full access privileges for any file for which you want to produce a Database Design Report and the file must be open in FileMaker Pro Advanced. You can run a Database Design Report on local or remote files.
2. Choose **Tools** menu > **Database Design Report**.
3. In the **Available Files** list, clear any files that you want to exclude from the report by clearing the checkbox associated with the file.
4. If there are any files that contain tables that you want to exclude from the report, select the file in addition to the checkbox in the **Available Files** list.
The tables in the file appear in the **Include fields from tables in selected file** list. You can then deselect any table in the list.
By default, all tables in all selected files are reported.
5. Clear elements that you want to exclude from the report.
By default, all elements in all selected files are reported. Each selected element, if present, will be reported on for each selected file.
6. If you prefer to publish the report in XML format instead of the default HTML, select **XML** in the Report Format section.
7. If you do not want the report to automatically open when done, clear the checkbox for this option in the File Handling section.
8. Click **Create**.

For more information about using the Database Design Report, see Help.

Appendix A

Feature comparison of the runtime application with FileMaker Pro

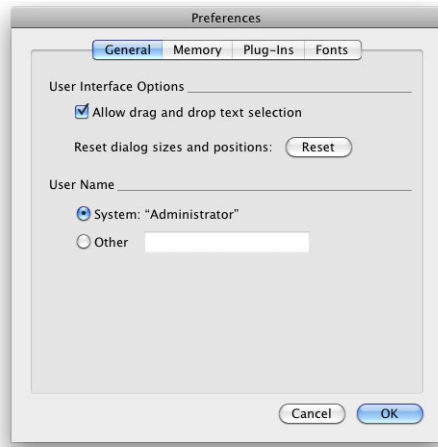
When you double-click the FileMaker Pro application icon to start the application you can create a new database or choose a file to open. When you start a FileMaker Pro runtime application, the primary bound database file opens automatically.

Other key differences between the runtime application and FileMaker Pro include the following:

- All the database design features have been removed or hidden in the runtime application. This includes Layout mode and commands on the Manage submenu.
- Custom functions and custom menus created with FileMaker Pro Advanced will work in the runtime application, although users of the runtime application cannot modify or create new custom functions or custom menus.
- Some other menu commands have been removed from the runtime application. For example, you can't use the runtime application to create, open, or close a database. (Bound runtime database files must contain a custom button or script to close or open other files. There is no close command on a runtime database window.)
- FileMaker Pro Help is not available in the runtime application. However, you can use the custom menu feature to display customized Help text that you create.
- Plug-ins can be enabled in the Preferences dialog box. The **Allow Solutions to Install Files** option in the Plug-Ins preferences allows plug-in updates to install automatically. For more information, see Help.
- Although the XML Data filter appears as an option for the Convert File script step, you can't convert XML files using this script step in a runtime application.
- FileMaker Pro File Sharing, serving a database on the web, or communicating with a Java applet requires FileMaker Pro or FileMaker Pro Advanced. You can, however, use a compatible version of FileMaker Server to serve runtime solution files.
- Apple events are supported in runtime applications.
- Runtime applications cannot be shared over a network.
- Runtime applications do not include the ability to Save/Send Records as Adobe PDF files.
- FileMaker Pro Advanced features are not available in the runtime application. A runtime database can, however, be opened in either FileMaker Pro or FileMaker Pro Advanced. The full functionality of these applications will be enabled, except if full access privileges have been removed.
- Runtime applications don't support external SQL data sources (ESS), ODBC import, or the Execute SQL script step.
- Charts are not supported in runtime solutions.

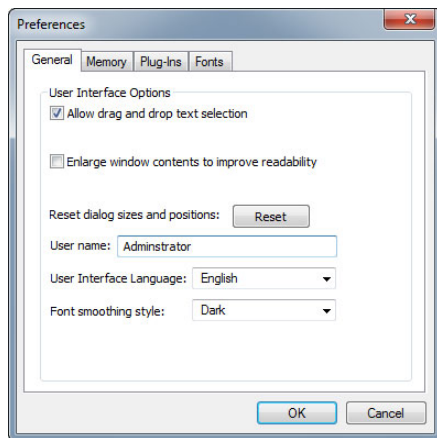
Application and document preferences

In the runtime application, some options are not available on the **General** tab of the Preferences dialog box.



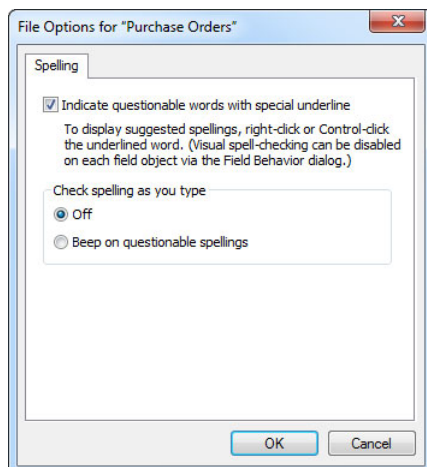
General preferences in a runtime application (Mac OS X)

The Layout tab is not included in the Preferences dialog box for the runtime application.



General preferences in a runtime application (Windows)

The File Options dialog box in the runtime application displays only the Spelling tab.



File options dialog box in a runtime application

Menu command comparison

The following tables show the menu commands that are available in FileMaker Pro (Pro) and in the runtime application (RT).

File Menu command	Windows Pro	Windows RT	Mac OS X Pro	Mac OS X RT
New Database	■		■	
New From	■		■	
Open	■		■	
Open Remote	■		■	
Open Recent	■		■	
Open Favorite	■		■	
Close	■		■	
Manage	■		■	
Sharing	■		■	
File Options	■	■	■	■
Change Password	■	■	■	■
Print Setup	■	■		
Page Setup			■	■
Print	■	■	■	■
Import Records	■	■	■	■
Export Records	■	■	■	■
Save/Send Records As	■	1	■	1
Send	■	2	■	2
Save a Copy As	■	■	■	■
Recover	■	3	■	4
Exit	■	■		

1. You can't Save/Send Records as PDFs or Snapshot Links. However, users can print the current record to PDF by choosing File menu > Print.
2. You can't Send a Link to Database
3. Press Ctrl+Shift
4. Press Option+⌘

Edit Menu command	Windows Pro	Windows RT	Mac OS X Pro	Mac OS X RT
Undo/Can't Undo	■	■	■	■
Redo	■	■	■	■
Cut	■	■	■	■
Copy (Copy All Records)	■	■	■	■

Edit Menu command	Windows Pro	Windows RT	Mac OS X Pro	Mac OS X RT
Paste	■	■	■	■
Paste Text Only	■	■	■	■
Clear	■	■	■	■
Duplicate	■		■	
Select All (Select All Records)	■	■	■	■
Find/Replace	■	■	■	■
Spelling	■	■	■	■
Object	1	1		
Export Field Contents	■	■	■	■
Preferences	■	■		

1. Disabled if a script is paused or a scripting window is in the foreground

View Menu command	Windows Pro	Windows RT	Mac OS X Pro	Mac OS X RT
Browse Mode	■	■	■	■
Find Mode	■	■	■	■
Layout Mode	■		■	
Preview Mode	■	■	■	■
Go to Layout	■	■	■	■
View as Form	■	■	■	■
View as List	■	■	■	■
View as Table	■	■	■	■
Status Toolbar	■	■	■	■
Customize Status Toolbar	■	■	■	■
Formatting Bar	■	■	■	■
Ruler	■	■	■	■
Zoom In	■	■	■	■
Zoom Out	■	■	■	■

Insert Menu command	Windows Pro	Windows RT	Mac OS X Pro	Mac OS X RT
Picture	■	■	■	■
QuickTime	■	■	■	■
Audio/Video	■	■	■	■
Sound	■	■	■	■
PDF	■	■	■	■
File	■	■	■	■

Insert Menu command	Windows Pro	Windows RT	Mac OS X Pro	Mac OS X RT
Current Date	■	■	■	■
Current Time	■	■	■	■
Current User Name	■	■	■	■
From Index	■	■	■	■
From Last Visited Record	■	■	■	■

Format Menu command	Windows Pro	Windows RT	Mac OS X Pro	Mac OS X RT
Font	■	■	■	■
Size	■	■	■	■
Style	■	■	■	■
Align Text	■	■	■	■
Line Spacing	■	■	■	■
Text Color	■	■	■	■

Records Menu command	Windows Pro	Windows RT	Mac OS X Pro	Mac OS X RT
New Record	■	■	■	■
Duplicate Record	■	■	■	■
Delete Record	■	■	■	■
Delete Found Records/Delete All Records	■	■	■	■
Go to Record	■	■	■	■
Refresh Window	■	■	■	■
Show All Records	■	■	■	■
Show Omitted Only	■	■	■	■
Omit Record	■	■	■	■
Omit Multiple	■	■	■	■
Modify Last Find	■	■	■	■
Saved Finds	■	■	■	■
Sort Records	■	■	■	■
Unsort	■	■	■	■
Replace Field Contents	■	■	■	■
Relookup Field Contents	■	■	■	■
Revert Record	■	■	■	■

Requests Menu command (Find mode)	Windows Pro	Windows RT	Mac OS X Pro	Mac OS X RT
Add New Request	■	■	■	■
Duplicate Request	■	■	■	■
Delete Request	■	■	■	■
Go to Request	■	■	■	■
Show All Records	■	■	■	■
Perform Find	■	■	■	■
Constrain Found Set	■	■	■	■
Extend Found Set	■	■	■	■
Revert Request	■	■	■	■

Scripts Menu command	Windows Pro	Windows RT	Mac OS X Pro	Mac OS X RT
Manage Scripts	■		■	
Save Script	■		■	
Save All Scripts	■		■	
Revert Script	■		■	
<Script names>	■	■	■	■

Note The **Save Script**, **Save All Scripts**, and **Revert Script** menu commands only appear when the Manage Scripts or Edit Script dialog box is active.

Window Menu command	Windows Pro	Windows RT	Mac OS X Pro	Mac OS X RT
New Window	■	■	■	■
Show Window	■	■	■	■
Hide Window	■	■	■	■
Minimize Window	■	■	■	■
Tile Horizontally	■	■	■	■
Tile Vertically	■	■	■	■
Cascade Windows	■	■	■	■
Arrange Icons	■	■		
Bring All To Front			■	■
<Names of open files>	■	■	■	■

Help Menu command	Windows Pro	Windows RT	Mac OS X Pro	Mac OS X RT
FileMaker Pro Help	■		■	
Keyboard Shortcuts	■		■	
Quick Start Screen	■		■	
Resource Center	■		■	
Product Documentation	■		■	
Consultants and Solutions	■		■	
Provide FileMaker Feedback	■		■	
Check for Updates	■		■	
Register FileMaker Pro	■		■	
FileMaker Forum	■		■	
Service and Support	■		■	
About FileMaker Pro (or About FileMaker Pro Advanced)	■		1	
About FileMaker Pro Runtime (Displays if no custom About script is specified)		■		1
About <runtime solution> (Displays if custom About script is specified)		■		1
<Runtime solution Help script name> (Displays if custom Help script is specified)		■		■

¹ See Application Menu command table

Application Menu command (Mac OS X only)	Pro	RT
About FileMaker Pro	■	
About FileMaker Pro Runtime (Displays if no custom About script is specified)		■
About <runtime solution> (Displays if custom About script is specified)		■
Preferences	■	■
Services	■	■
Hide FileMaker Pro	■	
Hide <runtime solution>		■
Hide Others	■	■
Show All	■	■
Quit FileMaker Pro	■	
Quit <runtime solution>		■

Ignored script steps

Because some features have been removed from the runtime application, the following script steps are ignored by the runtime application:

- Open Manage Database
- Open Manage Value List
- Open Manage Data Sources
- Open Manage Scripts
- Open Manage Layouts
- Open Manage Containers
- Open Sharing
- Open Help
- Set Multi-User
- New File
- Open File Options (partially available; Spell checking tab will open)
- Open Remote
- Execute SQL
- Save Records As PDF
- Save Records As Snapshot Link

Note Open File returns an error if the specified file has not been bound to the runtime application. A runtime solution can only perform an external script if the external file is bound to the runtime solution.

Stored registry settings or preferences

Windows registry settings

FileMaker Pro stores its registry settings at

```
HKEY_CURRENT_USER\Software\FileMaker\FileMaker Pro\12.0
```

FileMaker Pro Advanced stores its registry settings at

```
HKEY_CURRENT_USER\Software\FileMaker\FileMaker Pro\12.0A
```

The runtime application stores its registry settings at

```
HKEY_CURRENT_USER\Software\FileMaker\<<solution name>\12.0
```

Note The filename extension for the runtime database files is registered at HKEY_CLASSES_ROOT.

Mac OS X preferences

FileMaker Pro stores its preferences settings in

```
com.filemaker.client.pro.plist
```

FileMaker Pro Advanced stores its preferences settings in

```
com.filemaker.client.advanced.plist
```

The runtime application stores its preferences in

```
com.filemaker.client.runtime.<Solution name>.plist
```

Index

- A**
 - About layout
 - described 6
 - required contents of 7
 - access privileges 7, 18
 - accounts and privileges 7, 18
 - removing Admin access 9
 - Admin access
 - removing from files 9
 - removing from Kiosk solutions 17
 - Apple events in runtime applications 31
 - authenticating scripts 26
 - auxiliary files
 - problems with double-clicking icons 12
 - updating 16
- B**
 - backups 15
 - binding key
 - about 11
 - updating runtime database solutions 15
 - binding runtime solutions 11
- C**
 - commands, menu
 - available in runtime applications 33
 - compression utilities for runtime databases 14
 - converting files from previous versions 10
 - copying field or table schemas 18
 - cross-platform solutions 11
 - custom functions, creating 19
 - custom menus
 - about 20
 - creating 21
 - menu items 21
 - menu sets 23
 - specifying platform 23
- D**
 - data sources
 - updating 15
 - updating automatically 9
 - Data Viewer 27
 - Database Design Reports 29
 - database schemas
 - copying or importing 18
 - in Database Design Report 29
 - database statistics 29
 - database structure, recreating 29
 - DDR. *See* Database Design Reports
 - debugging scripts 25
 - delay, splash screen 11
 - Developer Utilities
 - about 8
 - creating runtime solutions 9
 - disabling script steps 26
 - disabling script triggers 27
 - distributing runtime database solutions
 - about 12
 - distributing updates 15
 - terms and conditions 6
 - documenting
 - Database Design Reports 29
 - runtime solutions 14
 - Dynamic Link Libraries (DLLs) 12
- E**
 - Edit menu commands available in runtime applications 33
 - error codes, viewing from Script Debugger 25
 - error log 9
 - Execute SQL script step 38
 - expressions, monitoring 27
 - extensions, filename. *See* filename extensions
- F**
 - fields
 - copying schema 18
 - monitoring 27
 - File menu commands available in runtime applications 33
 - File Options available in runtime application 32
 - file references. *See* data sources
 - FileMaker Developer. *See* FileMaker Pro Advanced
 - FileMaker Pro Advanced
 - documentation 5
 - license agreement 6
 - upgrading from earlier versions 10
 - FileMaker Pro, menus available 33
 - FileMaker Server 14, 31
 - filename extensions
 - for database files 9
 - for runtime solutions 11
 - files
 - compressing runtime 14
 - converting 10
 - removing Admin access 9
 - renaming 8
 - updating 9
 - folder structure, solution 12
 - fonts
 - not on user's system 13
 - Format menu commands available in runtime applications 35
 - formulas
 - for custom functions 19
 - monitoring 27

functions
 custom 19
 monitoring in formulas 29

H

Help
 menu commands available in runtime applications 37
 Help layout 14
 HTML format for Database Design Reports 29

I

icons for runtime solutions 12
 Insert menu commands available in runtime applications 34
 installation instructions 6
 installers for runtime databases 13
 InstallShield 13
 Internet
 databases on 6
 runtime applications on 31

J

JDBC, FileMaker as data source 6

K

keyboard shortcuts in custom menu items 23
 Kiosk solutions, creating 16

L

Layout mode commands, unavailable in runtime applications 31
 legal requirements 6
 license agreement 6
 Logfile.txt 9
 logo, adding to runtime solution 11

M

Mac OS X
 runtime application package 13
 stored preferences 38
 MacInstallerBuilder 13
 Manage Scripts 26
 Manage submenu, unavailable in runtime applications 31
 menu commands, available in runtime applications 33
 menu separators 22
 menu sets, creating 23
 messages, error log 9
 Microsoft Windows, stored registry settings 38
 MindVision Installer VISE 13
 multiple tables per database file 10

N

naming runtime database solutions 11
 networks, sharing solutions on 14

new features 6
 New File script step 38

O

ODBC, FileMaker as data source 6
 Open File Options script step 38
 Open File script step 38
 Open Help script step 38
 Open Manage Containers 38
 Open Manage Data Sources script step 38
 Open Manage Database script step 38
 Open Manage Layouts script step 38
 Open Manage Scripts script step 38
 Open Manage Value List script step 38
 Open Remote script step 38
 Open Sharing script step 38
 opening files in runtime applications 31

P

passwords, required warning in About layout 7
 PDF documentation 6
 platform, specifying for custom menus 23
 plug-ins
 in runtime applications 31
 preferences available in runtime application 32
 primary file
 connecting auxiliary files 10
 specifying 8
 updating 16
 Project Folder 8, 11

R

Records menu commands available in runtime applications 35
 recovering damaged runtime files 14
 registry, stored settings 38
 renaming files 8
 reports, database 29
 runtime applications
 available menu commands 33
 compared to FileMaker Pro 31
 enabling plug-ins in 31
 icon 12
 ignored script steps 38
 stored Mac OS X preferences 38
 stored Windows registry settings 38
 runtime database solutions
 About layout requirements 7, 14
 binding files 11
 converting 10
 creating 8, 9
 documenting 12
 preparing files 9
 recovering damaged files 14
 starting 12
 updating 15
 upgrading 10

- ## S
- Save Records as PDF script step 38
 - Save Records as Snapshot Link script step 38
 - schemas, database
 - copying or importing 18
 - documenting 29
 - Script Debugger
 - described 25
 - with script triggers 26
 - script triggers, debugging 26
 - scripts
 - authenticating 26
 - debugging 25
 - disabling script steps 26
 - disabling script triggers 27
 - steps ignored by runtime applications 38
 - unlocking 26
 - Scripts menu
 - commands available in runtime applications 36
 - separators, menu item 22
 - Set Multi-User script step 38
 - settings file 9
 - shortcuts, keyboard. *See* keyboard shortcuts
 - solution file
 - icon 12
 - problems with double-clicking icon 12
 - splash screen in runtime solutions
 - closing 11
 - startup 10
 - starting runtime solutions 12
 - statistics, database 29
 - structure, database 29
- ## T
- tables, database
 - copying or importing schema 18
 - excluding from Database Design Report 30
 - multiple per file 10
 - testing
 - database solutions 15
 - scripts 25
 - touch screen 16
 - troubleshooting
 - calculations 27
 - fields 27
 - Script Debugger 25
 - using Database Design Reports 29
 - variables 27
 - tutorial, FileMaker Pro 6
- ## U
- unlocking scripts 26
 - updates
 - to runtime solutions 15
 - upgrading runtime databases 10
 - user interaction with database solution 10
- ## V
- variables, monitoring 27
 - View menu commands available in runtime applications 34
- ## W
- web browser users 6
 - web viewer 14
 - Window menu commands available in runtime applications 36
 - Windows runtime application package 13
- ## X
- XML
 - format for Database Design Reports 29
 - output grammar for DDR 6